

Passenger & Service Hours Statistics

January 2021

	Total Passenger Trips			Service Hours			Passengers Per Service Hour		
	Jan 2021	Dec 2020	Jan 2020	Jan 2021	Dec 2020	Jan 2020	Jan 2021	Dec 2020	Jan 2020
250 Connector	2,871	3,167	7,401	556.0	572.0	596.0	5.2	5.5	12.4
250 Connector- SAT	519	419	1,021	110.0	88.0	88.0	4.7	4.8	11.6
Waynesboro Circulator	1,592	1,499	3,559	237.0	250.0	257.0	6.7	6.0	13.8
Waynesboro Circulator- SAT	330	272	461	65.0	52.0	52.0	5.1	5.2	8.9
Downtown Trolley	946	782	1,356	200.0	198.5	201.5	4.7	3.9	6.7
Saturday Night Trolley	64	51	116	15.0	12.0	12.0	4.3	4.3	9.7
North & West Loops	1,760	1,993	3,169	258.5	266.5	276.5	6.8	7.5	11.5
North & West Loops- SAT	282	201	297	50.0	40.0	40.0	5.6	5.0	7.4
Access 1	252	291	313	180.0	188.5	201.5	1.4	1.5	1.6
Access 2	288	294	220	180.0	186.0	201.5	1.6	1.6	1.1
Stuarts Draft Link	380	399	913	237.0	251.0	244.5	1.6	1.6	3.7
BRCC North			1,687			327.1			5.2
BRCC South			1,762			309.5			5.7
BRCC North & South- M-TH	937	1,110		491.3	548.3		1.9	2.0	
BRCC North & South- FRI	220	201		101.3	76.0		2.2	2.6	
TOTAL	10,441	10,679	22,275	2,681.1	2,728.7	2,807.1	3.9	3.9	7.9

Spotlight

Service Notes

CDC Mask Order



Effective immediately, face masks are required on public transportation, per federal law (CDC Mask Order). Face masks should cover both the mouth and nose, and be worn while awaiting, boarding, traveling on, or disembarking the bus. Free face masks are available on all BRITE Buses.

- In observance of the New Year's holiday, there was no BRITE service on Friday, January 1, 2021.
- Due to a water main break on Greenville Avenue on January 5, the 250 Connector was detoured while lanes of traffic were closed.
- On January 6, CSPDC staff completed an asset inventory of passenger amenities.
- The BRITE Transit Advisory Committee held their regularly scheduled meeting (via videoconference) on January 13.
- On January 18, all routes operated their regular schedules.
- Due to a business fire on Greenville Avenue on January 22, the 250 Connector was detoured while lanes of traffic were closed.
- The BRITE Transit Facility inspection was completed on January 22.
- Due to inclement weather on January 25, the BRCC Shuttles (North and South) suspended service at 8:00PM.
- On January 26, due to inclement weather and slick road conditions, BRITE Bus routes operated on a two hour delay.
- On January 28, due to slick road conditions, the Waynesboro Circulator and Stuarts Draft Link operated on a one hour delay.
- The Walmart Waynesboro shelter was permanently moved to a safer location on the premises.
- Due to the COVID-19 pandemic, rides are fare-free on all BRITE Bus routes until further notice.

Passenger & Service Hours Statistics

February 2021

	Total Passenger Trips			Service Hours			Passengers Per Service Hour		
	Feb 2021	Jan 2021	Feb 2020	Feb 2021	Jan 2021	Feb 2020	Feb 2021	Jan 2021	Feb 2020
250 Connector	2,587	2,871	7,637	484.0	556.0	560.0	5.3	5.2	13.6
250 Connector- SAT	336	519	1,358	66.0	110.0	110.0	4.7	4.7	12.3
Waynesboro Circulator	1,317	1,592	3,245	208.0	237.0	240.0	6.3	6.7	13.5
Waynesboro Circulator- SAT	195	330	583	29.0	65.0	65.0	5.0	5.1	9.0
Downtown Trolley	844	946	1,398	165.0	200.0	200.0	5.1	4.7	7.0
Saturday Night Trolley	47	64	138	9.0	15.0	15.0	5.2	4.3	9.2
North & West Loops	1,661	1,760	3,191	224.5	258.5	260.0	7.4	6.8	12.3
North & West Loops- SAT	168	282	408	30.0	50.0	50.0	5.6	5.6	8.2
Access 1	214	252	361	144.0	180.0	180.0	1.5	1.4	2.0
Access 2	253	288	213	144.0	180.0	180.0	1.8	1.6	1.2
Stuarts Draft Link	340	380	895	208.0	237.0	240.0	1.6	1.6	3.7
BRCC North & South- M-TH	795	937	3,234	454.95	491.3	501.3	1.7	1.9	6.5
BRCC North & South- FRI	124	220	389	67.99	101.3	101.3	1.8	2.2	3.8
TOTAL	8,881	10,441	23,050	2,244.4	2,681.1	2,702.6	3.9	3.9	8.5

Spotlight

Service Notes

DRPT GRANTS



CSPDC staff submitted FY 2022 DRPT grants on February 1, 2021. Grant applications were submitted for Urban & Rural Operating & Capital, Commuter Assistance Program Operating, and Technical Assistance for a Transit Development Plan.

NTI COURSE



CSPDC staff attended and completed a National Transit Institute class on the National Transit Database February 22-25.

- On February 1, BRITE routes operated on a four-hour delay (and no BRITE Access) due to inclement weather.
- Staff participated in the Statewide General Transit Feed (GTFS) webinar hosted by DRPT on February 5.
- Beginning February 8, the 250 Connector was rerouted around the Staunton Mall in anticipation of upcoming demolition and construction.
- BRITE staff participated in the Waynesboro Park & Ride Lot pre-construction meeting via videoconference on February 11.
- Due to inclement weather on February 11, BRITE routes suspended service at 7:30PM.
- On February 12 and 13, BRITE routes did not operate due to inclement weather.
- On February 15, all routes operated their regular schedules.
- Due to inclement weather, BRITE routes did not operate on February 18.
- On February 19, due to inclement weather, BRITE routes operated on a four-hour delay (and no BRITE Access).
- The BRITE Transit Facility inspection was completed on February 19.
- On February 22, due to slick road conditions, the Staunton North & West Loops detoured in the morning.
- BRITE staff participated in various FTA stakeholder calls regarding the CDC Mask Order for public transportation.
- Due to the COVID-19 pandemic, rides are fare-free on all BRITE Bus routes until further notice.

Passenger & Service Hours Statistics

March 2021

	Total Passenger Trips			Service Hours			Passengers Per Service Hour		
	March 2021	Feb 2021	March 2020	March 2021	Feb 2021	March 2020	March 2021	Feb 2021	March 2020
250 Connector	3,963	2,587	5,751	644.0	484.0	616.0	6.2	5.3	9.3
250 Connector- SAT	559	336	805	88.0	66.0	88.0	6.4	4.7	9.1
Waynesboro Circulator	1,896	1,317	2,815	276.0	208.0	264.0	6.9	6.3	10.7
Waynesboro Circulator- SAT	317	195	399	52.0	39.0	52.0	6.1	5.0	7.7
Downtown Trolley	1,221	844	1,300	216.0	165.0	208.0	5.7	5.1	6.3
Saturday Night Trolley	66	47	71	12.0	9.0	12.0	5.5	5.2	5.9
North & West Loops	2,253	1,661	3,177	299.0	224.5	286.0	7.5	7.4	11.1
North & West Loops- SAT	265	168	281	40.0	30.0	40.0	6.6	5.6	7.0
Access 1	357	214	174	207.0	144.0	198.0	1.7	1.5	0.9
Access 2	349	253	133	207.0	144.0	198.0	1.7	1.8	0.7
Stuarts Draft Link	473	340	709	276.0	208.0	264.0	1.7	1.6	2.7
BRCC North & South- M-TH	1,299	795	1,725	595.3	494.95	563.9	2.2	1.7	3.1
BRCC North & South- FRI	264	124	112	101.3	67.99	101.3	2.6	1.8	1.1
TOTAL	13,282	8,881	17,452	3,013.6	2,244.4	2,891.2	4.4	3.9	6.0

Spotlight

Service Notes

BRITE Celebrates Transit Driver Appreciation Day



March 18 was Transit Driver Appreciation Day, and BRITE celebrated with donuts and goodies for the drivers!

- On March 2, BRITE staff gave an outreach presentation to RISE, a community organization based in Waynesboro (via videoconference).
- The 250 Connector (eastbound) was delayed due to an accident in the Staunton Walmart parking lot on March 4.
- The BRITE Transit Advisory Committee held their regularly scheduled meeting on March 10 (via videoconference).
- On March 10, the West Loop was minorly delayed due to an incident, but the North Loop was able to resume its route on time.
- Beginning March 16, and until further notice, the 250 Connector can't access the old Kmart parking lot in Waynesboro and will pick-up and drop-off passengers near the Sprint store.
- The BRITE Transit Facility inspection was completed on March 19.
- On March 31, BRITE staff participated in the Exit 235/Route 256 Small Area Study Kick Off meeting (via videoconference).
- BRITE staff participated in various FTA stakeholder calls regarding transit's role in vaccination access and coordination.
- Due to the COVID-19 pandemic, rides are fare-free and face masks are required on all BRITE Bus routes until further notice.

Passenger & Service Hours Statistics

April 2021

	Total Passenger Trips			Service Hours			Passengers Per Service Hour		
	April 2021	March 2021	April 2020	April 2021	March 2021	April 2020	April 2021	March 2021	April 2020
250 Connector	4,609	3,963	3,088	616.0	644.0	616.0	7.5	6.2	5.0
250 Connector - SAT	585	559	404	88.0	88.0	88.0	6.6	6.4	4.6
Waynesboro Circulator	1,996	1,896	1,638	264.0	276.0	264.0	7.6	6.9	6.2
Waynesboro Circulator - SAT	325	317	273	52.0	52.0	52.0	6.3	6.1	5.3
Downtown Trolley	1,240	1,221	996	208.0	216.0	208.0	6.0	5.7	4.8
Saturday Night Trolley	72	66	53	12.0	12.0	12.0	6.0	5.5	4.4
North & West Loops	2,529	2,253	1,655	286.0	299.0	286.0	8.8	7.5	5.8
North & West Loops - SAT	265	265	179	40.0	40.0	40.0	6.6	6.6	4.5
Access 1	348	357	185	198.0	207.0	198.0	1.8	1.7	0.9
Access 2	343	349	208	198.0	207.0	198.0	1.7	1.7	1.1
Stuarts Draft Link	453	473	348	264.0	276.0	264.0	1.7	1.7	1.3
BRCC North & South - M-TH	1,098	1,299	883	532.6	595.3	563.9	2.1	2.2	1.6
BRCC North & South - FRI	276	264	193	126.7	101.3	101.3	2.2	2.6	1.9
TOTAL	14,139	13,282	10,103	2,885.3	3,013.6	2,891.2	4.9	4.4	3.5

Spotlight

BRITE Resumes Weekend Staunton Detours to Coincide with Shop & Dine Out in Downtown



The City of Staunton's shopping and dining initiative, Shop & Dine Out in Downtown, resumed in April 2021, and BRITE Bus resumed its downtown detours that coincide with the closure of Beverley Street. Beverley Street is closed to vehicular traffic from Lewis Street to Market Street on Fridays beginning at 4PM and continuing through Mondays at 7:30AM (cross streets remain open). The BRITE Staunton Downtown Trolley and Saturday Night Trolley detour and do not make the following stops during that period: Staunton City Hall; Staunton Visitor Center; Beverley St/Market St; and Hotel 24 South.

Service Notes

- Beginning April 2, BRITE resumed Downtown Staunton detours that coincide with the closures of Beverley Street for Shop & Dine Out in Downtown.
- On April 4, CSPDC staff participated in the DRPT TransAM webinar. TransAM is the statewide transit asset management system.
- The BRITE Transit Facility inspection was completed on April 16.
- On April 29, CSPDC staff participated in the Commonwealth Transportation Board's Spring Meeting for the Six-Year Improvement Program.
- BRITE staff participated in various FTA stakeholder calls regarding transit's role in vaccination access and coordination.
- Due to the COVID-19 pandemic, rides are fare-free and face masks are required on all BRITE Bus routes until further notice.

Passenger & Service Hours Statistics

May 2021

	Total Passenger Trips			Service Hours			Passengers Per Service Hour		
	May 2021	April 2021	May 2020	May 2021	April 2021	May 2020	May 2021	April 2021	May 2020
250 Connector	4,336	4,609	3,093	560.0	616.0	560.0	7.7	7.5	5.5
250 Connector - SAT	796	585	560	110.0	88.0	110.0	7.2	6.6	5.1
Waynesboro Circulator	2,104	1,996	1,616	240.0	264.0	240.0	8.8	7.6	6.7
Waynesboro Circulator - SAT	492	325	340	65.0	52.0	65.0	7.6	6.3	5.2
Downtown Trolley	1,313	1,240	1,101	214.0	208.0	208.0	6.1	6.0	5.3
Saturday Night Trolley	87	72	53	16.0	12.0	15.0	5.4	6.0	3.5
North & West Loops	2,349	2,529	1,492	260.0	286.0	260.0	9.0	8.8	5.7
North & West Loops - SAT	344	265	220	50.0	40.0	50.0	6.9	6.6	4.4
Access 1	330	348	229	180.0	198.0	180.0	1.8	1.8	1.3
Access 2	329	343	227	180.0	198.0	180.0	1.8	1.7	1.3
Stuarts Draft Link	447	453	359	240.0	264.0	240.0	1.9	1.7	1.5
BRCC North & South - M-TH	1,195	1,098	744	501.3	532.6	470.0	2.4	2.1	1.6
BRCC North & South - FRI	210	276	272	101.3	126.7	126.7	2.1	2.2	2.1
TOTAL	14,332	14,139	10,306	2,717.6	2,885.3	2,704.7	5.3	4.9	3.8

Spotlight

Service Notes

Summer Trolley Hours Implemented



Beginning May 28, 2021, the Staunton Downtown Trolley and Saturday Night Trolley will operate the following hours:

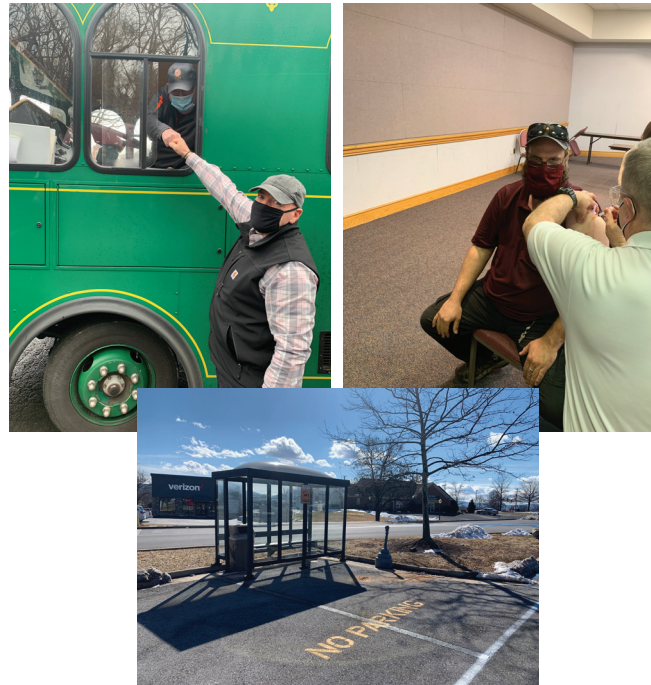
- Downtown Trolley: Monday-Friday, 10AM-9PM; Saturday, 10AM-6PM
- Saturday Night Trolley: Saturday, 6PM-10PM

- The BRITE Transit Advisory Committee held their regularly scheduled meeting on May 12 (via videoconference).
- On May 13, BRITE staff attended the City of Staunton STARS Study Meeting.
- The Virginia Regional Transit quarterly staff meeting was held on May 15.
- The BRITE Transit Facility inspection was completed on May 19.
- On May 21, BRITE staff attended the Virginia Transit Association Board of Directors Meeting (via videoconference).
- Trolley Summer Hours were implemented beginning May 28.
- Due to the COVID-19 pandemic, rides are fare-free and face masks are required on all BRITE Bus routes until July 5.

June 2021 | FY 2021 Year End Summary

Passenger Trips by Route	07-20	08-20	09-20	10-20	11-20	12-20	01-21	02-20	03-20	04-20	05-20	06-20	Total
Waynesboro Circulator	2,171	2,130	2,036	2,229	2,049	1,771	1,922	1,512	2,213	2,321	2,596	2,669	25,619
250 Connector	3,915	3,931	4,161	4,484	3,835	3,586	3,390	2,923	4,522	5,194	5,132	5,822	50,895
Downtown Trolley	1,203	1,317	1,320	1,224	935	782	946	844	1,221	1,240	1,313	1,776	14,121
Saturday Night Trolley	30	72	64	90	59	51	64	47	66	72	87	74	776
North & West Loops	2,231	2,272	2,542	2,588	2,306	2,194	2,042	1,829	2,518	2,794	2,693	2,965	28,974
Access (Paratransit)	703	678	685	731	600	585	540	467	706	691	659	670	7,715
Stuarts Draft Link	493	517	481	517	493	399	380	340	473	453	447	387	5,380
BRCC North & South	1,397	1,255	1,438	1,501	1,386	1,311	1,157	919	1,563	1,374	1,405	1,545	16,251
TOTAL	12,143	12,172	12,727	13,364	11,663	10,679	10,441	8,881	13,282	14,139	14,332	15,908	149,731

- Through FY2021, BRITE continued to coordinate with Federal and State agencies regarding the COVID-19 pandemic to ensure the health and safety of riders and operators. BRITE Bus was awarded CARES Act funding, which allowed the system to maintain operations, offer fare-free trips from March 2020 through June 2021, purchase personal protective equipment and cleaning supplies, and fully fund operations for FY2021 without requiring local partner funding.
- Specific safety measures included plexiglass barriers and free masks available on the buses and touchless faucets and hand sanitizer stations installed at the transit facility. BRITE adhered to issued mandates and guidance regarding mask wearing and social distancing on buses.
- Due to COVID-19, the Staunton Downtown Trolley and Saturday Night Trolley Summer hours were not implemented in 2020, but saw a delayed implementation in late May 2021.
- BRITE was awarded SMART SCALE funding for bus stop and pedestrian improvements at three stops along the service routes.
- October was Transit Appreciation Month- designated by DRPT in lieu of Try Transit Week, normally observed in September.
- In lieu of participating in holiday parades, BRITE participated in the Celebration of Holiday Lights in Gypsy Hill Park in Staunton.
- Operational changes in FY2021 included: a new bus shelter installed in Bridgewater; BRITE no longer travels the entirety of C Street in Staunton due to safety concerns; the Walmart Waynesboro shelter was permanently relocated to a safer area.



Financials	FY 2021
Administrative	\$223,611
Service Contract	\$1,689,703
Fuel	\$215,731
Facility	\$82,242
Other Costs	\$38,944
Subtotal	\$2,250,232
Less Fares	(\$1,900)
	\$2,248,332
Federal	\$1,921,413
State	\$323,759
Local	\$3,160
\$	\$2,248,332

Passenger & Service Hours Statistics

July 2021

	Total Passenger Trips			Service Hours			Passengers Per Service Hour		
	July 2021	June 2021	July 2020	July 2021	June 2021	July 2020	July 2021	June 2021	July 2020
250 Connector	4,410	5,145	3,545	616.0	616.0	644.0	7.2	8.4	5.5
250 Connector- SAT	788	677	370	110.0	88.0	66.0	7.2	7.7	5.6
Waynesboro Circulator	1,983	2,284	1,928	264.0	264.0	276.0	7.5	8.7	7.0
Waynesboro Circulator- SAT	426	385	243	65.0	52.0	39.0	6.6	7.4	6.2
Downtown Trolley	1,281	1,776	1,203	282.0	274.0	216.0	4.5	6.5	5.6
Saturday Night Trolley	84	74	30	20.0	16.0	9.0	4.2	4.6	3.3
North & West Loops	2,321	2,593	2,095	286.0	286.0	299.0	8.1	9.1	7.0
North & West Loops- SAT	320	372	136	50.0	40.0	30.0	6.4	9.3	4.5
Access 1	287	312	359	198.0	198.0	207.0	1.4	1.6	1.7
Access 2	323	358	344	198.0	198.0	207.0	1.6	1.8	1.7
Stuarts Draft Link	413	387	493	264.0	264.0	276.0	1.6	1.5	1.8
BRCC North & South- M-TH	859	1,300	1,120	532.6	563.9	563.9	1.6	2.3	2.0
BRCC North & South- FRI	249	245	277	126.7	101.3	126.7	2.0	2.4	2.2
TOTAL	13,744	15,908	12,143	3,012.3	2,961.3	2,959.6	4.6	5.4	4.1

Spotlight

Service Notes

Fares Reinstated



Beginning July 5, 2021, BRITE Bus resumed fare collection on all routes again. Rides can be paid for with BRITE farecards, exact change, or tokens. Those previously eligible for fare-free rides will continue to be able to ride fare-free. Face coverings and physical distancing are still required on buses.

- In observance of Independence Day, there was no service on July 4. BRITE operated regular service on July 3 and July 5.
- Beginning July 5, BRITE Bus resumed fare collection on all routes.
- On July 7, due to construction, the BRCC Shuttles did not use the bus stop at Houff, and stopped at Plecker East Lot in the morning.
- The BRITE Transit Advisory Committee canceled their regularly scheduled meeting on July 14.
- The BRITE Transit Facility Inspection was completed on July 16.
- CSPDC and VRT staff gave a BRITE presentation to the Augusta Lions on July 20.
- On July 29, due to the multi-vehicle incident and closure on I-81, the BRCC Shuttles were significantly delayed most of the day.
- CSPDC staff participated in a DRPT webinar regarding the Transit Equity and Modernization Study that the State is conducting.
- Trolley Summer Hours were implemented beginning May 28, and will go until further notice.

Passenger & Service Hours Statistics

August 2021

	Total Passenger Trips			Service Hours			Passengers Per Service Hour		
	Aug 2021	July 2021	Aug 2020	Aug 2021	July 2021	Aug 2020	Aug 2021	July 2021	Aug 2020
250 Connector	4,298	4,410	3,334	616.0	616.0	588.0	7.0	7.2	5.7
250 Connector- SAT	574	788	597	88.0	110.0	110.0	6.5	7.2	5.4
Waynesboro Circulator	1,841	1,983	1,761	264.0	264.0	252.0	7.0	7.5	7.0
Waynesboro Circulator- SAT	334	426	369	52.0	65.0	65.0	6.4	6.6	5.7
Downtown Trolley	1,222	1,281	1,317	274.0	282.0	208.0	4.5	4.5	6.3
Saturday Night Trolley	74	84	72	16.0	20.0	15.0	4.6	4.2	4.8
North & West Loops	2,203	2,321	2,020	286.0	286.0	273.0	7.7	8.1	7.4
North & West Loops- SAT	260	320	252	40.0	50.0	50.0	6.5	6.4	5.0
Access 1	290	287	368	198.0	198.0	189.0	1.5	1.4	1.9
Access 2	311	323	310	198.0	198.0	189.0	1.6	1.6	1.6
Stuarts Draft Link	379	413	517	264.0	264.0	252.0	1.4	1.6	2.1
BRCC North & South- M-TH	1,103	859	1,011	563.9	532.6	532.6	2.0	1.6	1.9
BRCC North & South- FRI	191	249	244	101.3	126.7	101.3	1.9	2.0	2.4
TOTAL	13,080	13,744	12,172	2,961.3	3,012.3	2,824.9	4.4	4.6	4.3

Spotlight

Service Notes

Afton Express Ribbon Cutting



A ribbon cutting to launch the Afton Express bus service and recognize project partners was held on August 16 at the BRITE Transit Facility. Over 50 local government representatives, stakeholders, Commissioners, and partners were in attendance.

- On August 1, BRITE staff participated in Waynesboro Public School's Back-To-School Bash at Kate Collins Middle School.
- BRITE staff participated in the SAWMPO Exit 235 Small Area Study Stakeholder meeting on August 6.
- On August 16, a ribbon cutting event was hosted for the Afton Express bus service at the BRITE Transit Facility.
- On August 16, the 250 Connector was re-routed along Frontier Drive & Greenville Avenue due to the closure of the Staunton Mall entrance on Frontier Drive.
- The CSPDC/BRITE Transit Asset Management (TAM) Facility Self-Assessment and BRITE Transit Facility Inspection were completed on August 18.
- CSPDC staff attended the Ivy Ridge Industrial Park Association organizational meeting (via Zoom) on August 19.
- On August 26, the BRCC Shuttles were detoured due to an incident that resulted in all lanes of Route 11 in Verona being closed.
- CSPDC staff completed two National Transit Institute courses- Title VI and Public Transit and Crisis Communications for Transit Managers.
- Trolley Summer Hours were implemented beginning May 28, and will go until further notice.

Passenger & Service Hours Statistics

September 2021

	Total Passenger Trips			Service Hours			Passengers Per Service Hour		
	Sep 2021	Aug 2021	Sep 2020	Sep 2021	Aug 2021	Sep 2020	Sep 2021	Aug 2021	Sep 2020
250 Connector	4,190	4,298	3,654	588.0	616.0	588.0	7.1	7.0	6.2
250 Connector- SAT	680	574	507	88.0	88.0	88.0	7.7	6.5	5.8
Waynesboro Circulator	1,888	1,841	1,726	252.0	264.0	252.0	7.5	7.0	6.8
Waynesboro Circulator- SAT	358	334	310	52.0	52.0	52.0	6.9	6.4	6.0
Downtown Trolley	1,093	1,222	1,320	274.0	274.0	208.0	4.0	4.5	6.3
Saturday Night Trolley	91	74	64	16.0	16.0	12.0	5.7	4.6	5.3
North & West Loops	1,913	2,203	2,262	273.0	286.0	273.0	7.0	7.7	8.3
North & West Loops- SAT	286	260	280	40.0	40.0	40.0	7.2	6.5	7.0
Access 1	274	290	374	189.0	198.0	189.0	1.4	1.5	2.0
Access 2	338	311	311	189.0	198.0	189.0	1.8	1.6	1.6
Stuarts Draft Link	347	379	481	252.0	264.0	252.0	1.4	1.4	1.9
BRCC North & South- M-TH	1,725	1,103	1,156	559.9	563.9	563.9	3.1	2.0	2.1
BRCC North & South- FRI	287	191	282	101.3	101.3	101.3	2.8	1.9	2.8
TOTAL	13,470	13,080	12,727	2,874.3	2,961.3	2,808.2	4.7	4.4	4.5

Spotlight

Service Notes

Afton Express Launches



Afton Express Commuter Bus Service Launched September 1!

VTA Conference



BRITE staff attended the Virginia Transit Association Conference in Tysons Corner September 28-29.

- On September 1, CSPDC launched the Afton Express commuter bus service.
- On September 6, in observance of Labor Day, the only BRITE routes that operated were the Staunton Downtown Trolley and the BRCC Shuttles.
- The regularly scheduled BTAC meeting was held on September 8, and the committee kicked off the Transit Development Plan.
- On September 9, BRITE staff attended an outreach event at Mary Baldwin University's Spencer Center.
- Due to construction on Lewis Street in Staunton on September 21, BRITE notified riders to expect delays as the buses navigated detours entering and exiting the Lewis Street Hub.
- Due to heavy traffic and incidents along Interstate 81 and Route 11 on September 22, the BRCC Shuttles experienced significant delays. Later that evening, due to inclement weather, the BRCC Shuttles ended service early at 9:00PM and 9:30PM.
- BRITE staff attended the Virginia Transit Association (VTA) Conference in Tysons Corner September 28-29.
- On September 29, CSPDC and VRT staff completed the BRITE Transit Facility inspection.
- BRITE implemented Trolley Summer Hours beginning May 28, and will go until November 1.

Passenger & Service Hours Statistics

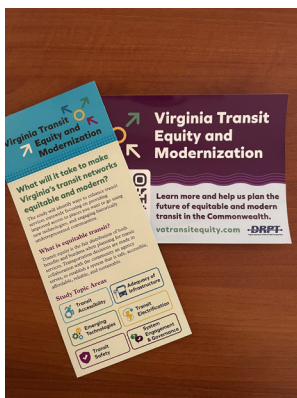
October 2021

	Total Passenger Trips			Service Hours			Passengers Per Service Hour		
	Oct 2021	Sep 2021	Oct 2020	Oct 2021	Sep 2021	Oct 2020	Oct 2021	Sep 2021	Oct 2020
250 Connector	4,037	4,190	3,822	588.0	588.0	616.0	6.9	7.1	6.2
250 Connector- SAT	796	680	662	110.0	88.0	110.0	7.2	7.7	6.0
Waynesboro Circulator	2,030	1,888	1,860	252.0	252.0	264.0	8.1	7.5	7.0
Waynesboro Circulator- SAT	466	358	369	65.0	52.0	65.0	7.2	6.9	5.7
Downtown Trolley	1,120	1,093	1,224	271.0	274.0	216.0	4.1	4.0	5.7
Saturday Night Trolley	116	91	90	20.0	16.0	15.0	5.8	5.7	6.0
North & West Loops	1,883	1,913	2,274	273.0	273.0	286.0	6.9	7.0	8.0
North & West Loops- SAT	354	286	314	50.0	40.0	50.0	7.1	7.2	6.3
Access 1	256	274	410	189.0	189.0	198.0	1.4	1.4	2.1
Access 2	270	338	321	189.0	189.0	198.0	1.4	1.8	1.6
Stuarts Draft Link	326	347	517	252.0	252.0	264.0	1.3	1.4	2.0
BRCC North & South- M-TH	1,578	1,725	1,191	501.3	559.9	532.6	3.1	3.1	2.2
BRCC North & South- FRI	281	287	310	126.7	101.3	126.7	2.2	2.8	2.4
TOTAL	13,513	13,470	13,364	2,886.9	2,874.3	2,941.3	4.7	4.7	4.5

Spotlight

Service Notes

DRPT Virginia Transit Equity and Modernization Study



CSPDC staff participated in DRPT's Virginia Transit Equity and Modernization Study's Accessibility and Adequacy of Infrastructure Working Group. The study will identify transit agency, rider, and stakeholder needs and develop an action plan to address those needs.

- BRITE staff participated in DRPT's FY23 Section 5310 Coordinated Human Service Mobility Meeting for the Alleghany region on October 1.
- BRITE riders were alerted to a stop change on the Staunton West Loop- the route would no longer stop at the closed Staunton Senior Center beginning October 1.
- On October 4, BRITE staff participated in DRPT's Virginia Transit Equity and Modernization Study- Accessibility and Adequacy of Infrastructure Working Group Meeting #1 (via videoconference).
- On October 8, due to increased traffic at JMU for Parents Weekend, the BRCC Shuttle only stopped at the JMU Godwin Transit Center if requested. The increased traffic also caused the bus to be delayed.
- All routes operated regular schedules on Columbus Day, October 11.
- On October 14, BRITE staff gave a presentation on BRITE Transit to the Waynesboro Rotary.
- On October 25, CSPDC and VRT staff completed the BRITE Transit Facility inspection.
- CSPDC staff participated in an FTA webinar regarding the Section 5339 Bus and Bus Facilities Grant program, and convened meetings with stakeholders to review proposed improvements for the Staunton Lewis Street Hub.

Passenger & Service Hours Statistics

November 2021

	Total Passenger Trips			Service Hours			Passengers Per Service Hour		
	Nov 2021	Oct 2021	Nov 2020	Nov 2021	Oct 2021	Nov 2020	Nov 2021	Oct 2021	Nov 2020
250 Connector	4,174	4,037	3,326	588.0	588.0	560.0	7.1	6.9	5.9
250 Connector- SAT	554	796	509	88.0	110.0	88.0	6.3	7.2	5.8
Waynesboro Circulator	1,875	2,030	1,743	252.0	252.0	240.0	7.4	8.1	7.3
Waynesboro Circulator- SAT	273	466	306	52.0	65.0	52.0	5.3	7.2	5.9
Downtown Trolley	941	1,120	935	200.0	271.0	192.0	4.7	4.1	4.9
Saturday Night Trolley	96	116	59	12.0	20.0	12.0	8.0	5.8	4.9
North & West Loops	1,940	1,883	2,009	273.0	273.0	260.0	7.1	6.9	7.7
North & West Loops- SAT	269	354	297	40.0	50.0	40.0	6.7	7.1	7.4
Access 1	229	256	324	189.0	189.0	180.0	1.2	1.4	1.8
Access 2	315	270	276	189.0	189.0	180.0	1.7	1.4	1.5
Stuarts Draft Link	342	326	493	252.0	252.0	240.0	1.4	1.3	2.1
BRCC North & South- M-TH	1,490	1,578	1,118	526.6	501.3	495.3	2.8	3.1	2.3
BRCC North & South- FRI	250	281	268	101.3	126.7	101.3	2.5	2.2	2.6
TOTAL	12,748	13,513	11,663	2,762.9	2,886.9	2,640.6	4.6	4.7	4.4

Spotlight

New Shelter & Bench Installed at Myers Corner



Thanks to Crescent Development Group for assisting with the installation process!

Service Notes

- Winter Hours on the BRITE Staunton Trolleys (Downtown and Saturday Night) were implemented on November 1.
- BRITE again offered free rides on all BRITE routes for Election Day, November 2.
- On November 3, BRITE staff participated in DRPT's Virginia Transit Equity and Modernization Study- Accessibility and Adequacy of Infrastructure Working Group Meeting (via videoconference).
- The regularly scheduled BTAC meeting was held on November 10.
- CSPDC staff submitted the FTA 5339 Bus and Bus Facilities grant application for rehabilitation of the Staunton Lewis Street Hub on November 19.
- On November 19, BRITE staff participated in DRPT's Tier II Transit Asset Management Plan Revision Kickoff webinar.
- In observance of Thanksgiving, BRITE BRCC Shuttles operated a Friday schedule on November 24 (service concluded at 7:30 and 8PM), and no service on November 25.
- On November 29, the Downtown Trolley participated in the Staunton Christmas Parade.
- On November 30, CSPDC and VRT staff completed the facility inspection.
- BRITE staff participated in DRPT's Transit/Special Programs/MPO Application webinar on November 30.
- BRITE staff participated in two USDOT public meetings regarding the Justice40 Initiative (via videoconference).
- The public opinion surveys and onboard rider surveys were launched in November for the Transit Development Plan process.

Passenger & Service Hours Statistics

December 2021

	Total Passenger Trips			Service Hours			Passengers Per Service Hour		
	Dec 2021	Nov 2021	Dec 2020	Dec 2021	Nov 2021	Dec 2020	Dec 2021	Nov 2021	Dec 2020
250 Connector	4,125	4,174	3,176	616.0	588.0	572.0	6.7	7.1	5.5
250 Connector- SAT	502	554	419	66.0	88.0	88.0	7.6	6.3	4.8
Waynesboro Circulator	1,749	1,875	1,499	268.0	252.0	250.0	6.5	7.4	6.0
Waynesboro Circulator- SAT	220	273	272	39.0	52.0	52.0	5.6	5.3	5.2
Downtown Trolley	926	941	782	202.0	200.0	198.5	4.6	4.7	3.9
Saturday Night Trolley	47	96	51	9.0	12.0	12.0	5.2	8.0	4.3
North & West Loops	2,059	1,940	1,993	287.0	273.0	266.5	7.2	7.1	7.5
North & West Loops- SAT	179	269	201	30.0	40.0	40.0	6.0	6.7	5.0
Access 1	248	229	291	203.0	189.0	188.5	1.2	1.2	1.5
Access 2	327	315	294	203.0	189.0	186.0	1.6	1.7	1.6
Stuarts Draft Link	434	342	399	268.0	252.0	251.0	1.6	1.4	1.6
BRCC North & South- M-TH	1,390	1,490	1,110	563.9	526.6	584.3	2.5	2.8	2.0
BRCC North & South- FRI	274	250	201	106.7	101.3	76.0	2.6	2.5	2.6
TOTAL	12,480	12,748	10,679	2,861.6	2,762.9	2,728.8	4.4	4.6	3.9

Spotlight

Afton Express and Stuarts Draft Link buses participated in the Waynesboro and Stuarts Draft Christmas parades on Dec 4th and 11th!



Service Notes

- On December 17, CSPDC and VRT staff completed the facility inspection.
- In observance of Christmas Eve and Christmas Day, all services concluded by 3:00 PM on Christmas Eve, and there was no service on Christmas Day.
- BRITE staff completed the annual transit asset inventory on December 27-28.
- In observance of New Year's Eve, all services concluded by 3:00 PM on December 31.
- The public opinion survey and onboard rider surveys were available in December for the Transit Development Plan process.
- The Federal Mask Mandate was extended until March 2022.